

Heavy Rainfall Warning based on 0300 UTC of 25th July, 2025

Warnings:

(i) Rainfall Warning:

Gangetic West Bengal: Light to moderate rainfall at most places with **heavy to very heavy rainfall** at a few places over Gangetic West Bengal and **extremely heavy rainfall (≥ 21 cm)** at isolated places over south Gangetic West Bengal is very likely on 25th July. **Heavy to very heavy rainfall** at isolated places is likely during 26th-28th July.

Odisha: Light to moderate rainfall at most places with **heavy to very heavy rainfall** at a few places over Odisha and **extremely heavy rainfall (≥ 21 cm)** at isolated places over north Odisha is very likely on 25th July. **Heavy to very heavy rainfall** at isolated places over Odisha is likely during 26th-28th July.

Jharkhand: Light to moderate rainfall at most places with **heavy to very heavy rainfall** at a few places over Jharkhand on 25th and 26th July and **extremely heavy rainfall (≥ 21 cm)** is very likely at isolated places over south Jharkhand on 25th July and **heavy rainfall** at isolated places over Jharkhand during 27th-28th July.

Chhattisgarh: Light to moderate rainfall at most places with **heavy to very heavy rainfall** at a few places over Chhattisgarh and **extremely heavy rainfall (≥ 21 cm)** at isolated places over north Chhattisgarh is very likely on 25th & 26th July. **Heavy to very heavy rainfall** at isolated places is likely on 27th & 28th July.

East Madhya Pradesh: Light to moderate rainfall at most places with **heavy to very heavy rainfall** at isolated places is very likely during 25th – 28th July with **extremely heavy rainfall (≥ 21 cm)** on 26th July.

West Madhya Pradesh: Light to moderate rainfall at most places with **heavy to very heavy rainfall** at isolated places is very likely during 25th – 28th July with **extremely heavy rainfall (≥ 21 cm)** on 26th & 27th July.

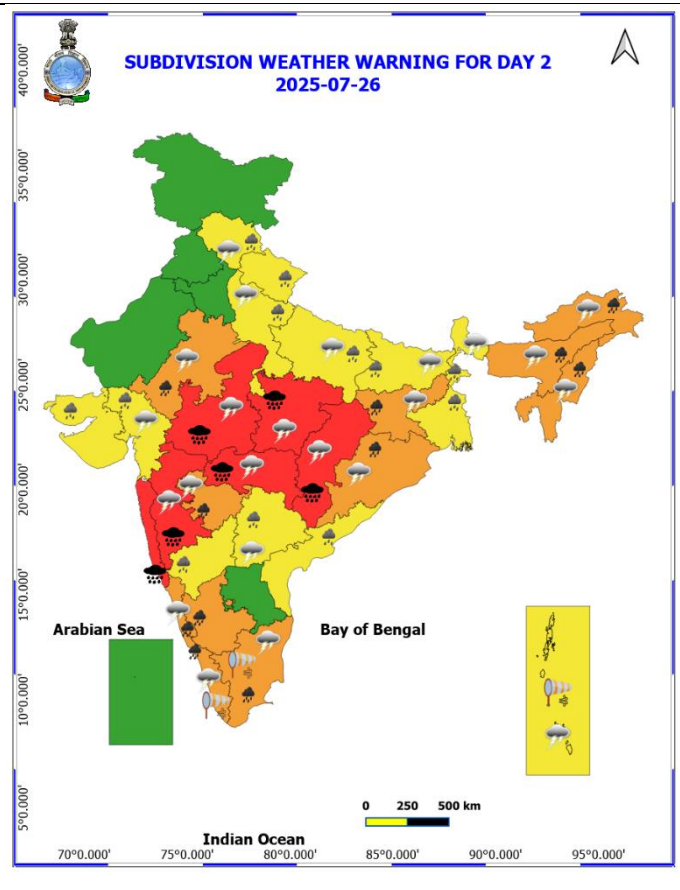
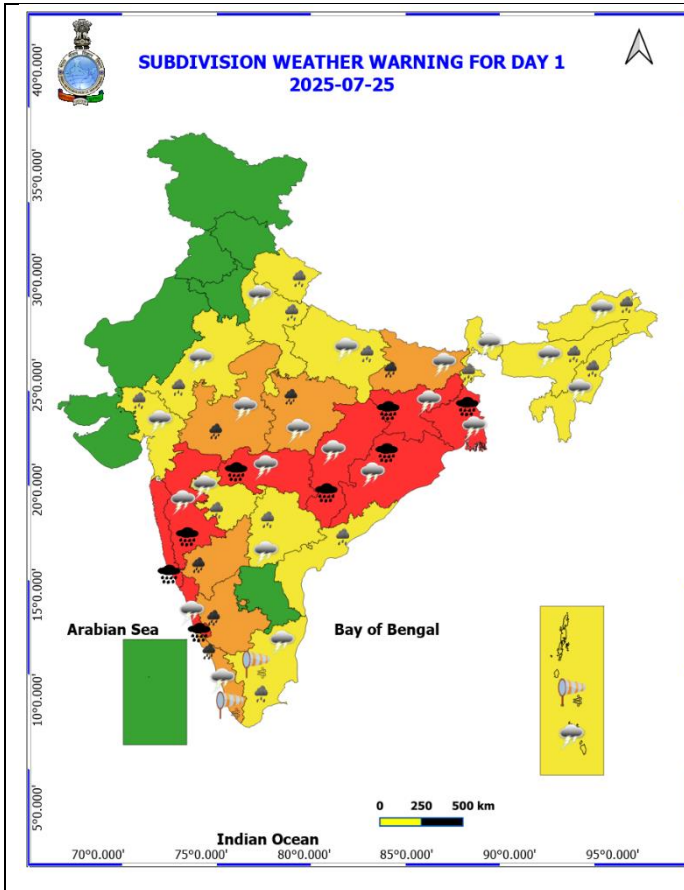
Bihar: Light to moderate rainfall at most places with **heavy to very heavy rainfall** at isolated places is very likely on 25 and 26th July. Heavy rainfall at isolated places is likely on 27th July.

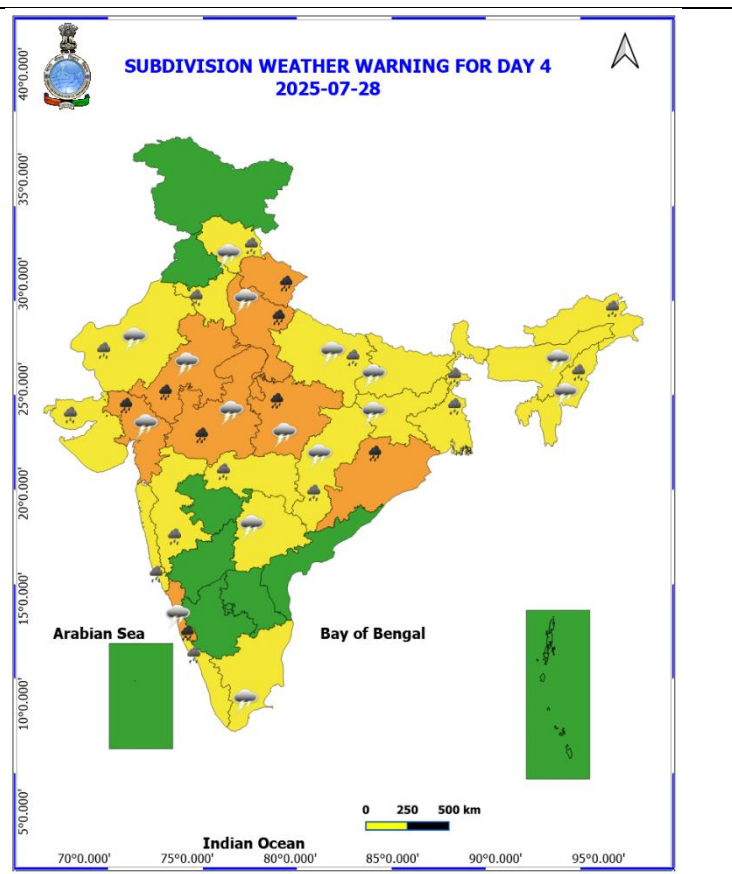
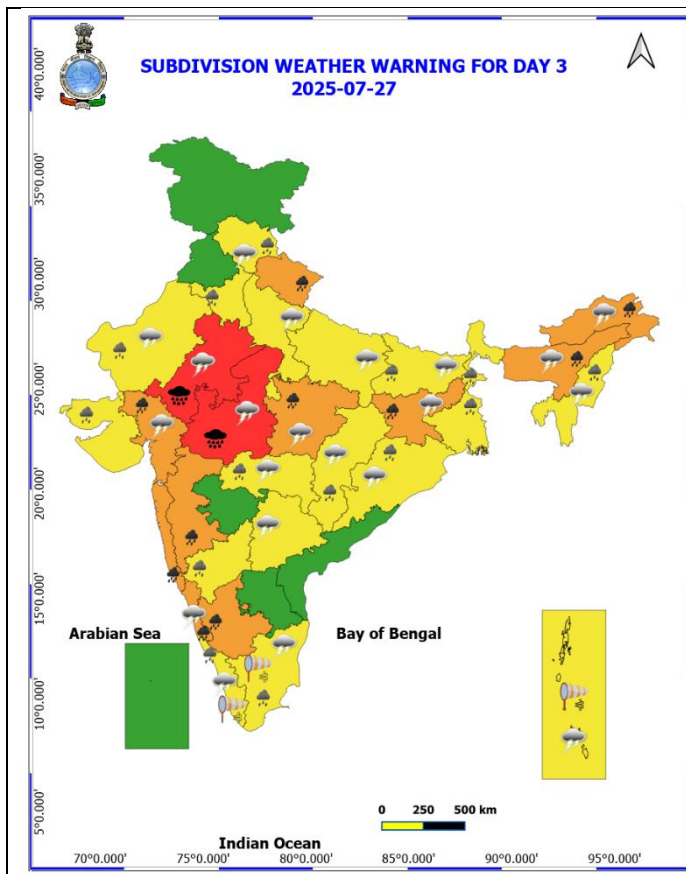
Vidarbha: Light to moderate rainfall at most places with **heavy to very heavy rainfall** at a few places and **extremely heavy rainfall (≥ 21 cm)** is very likely at isolated places on 25th and 26th July and **heavy rainfall** at isolated places on 27th July.

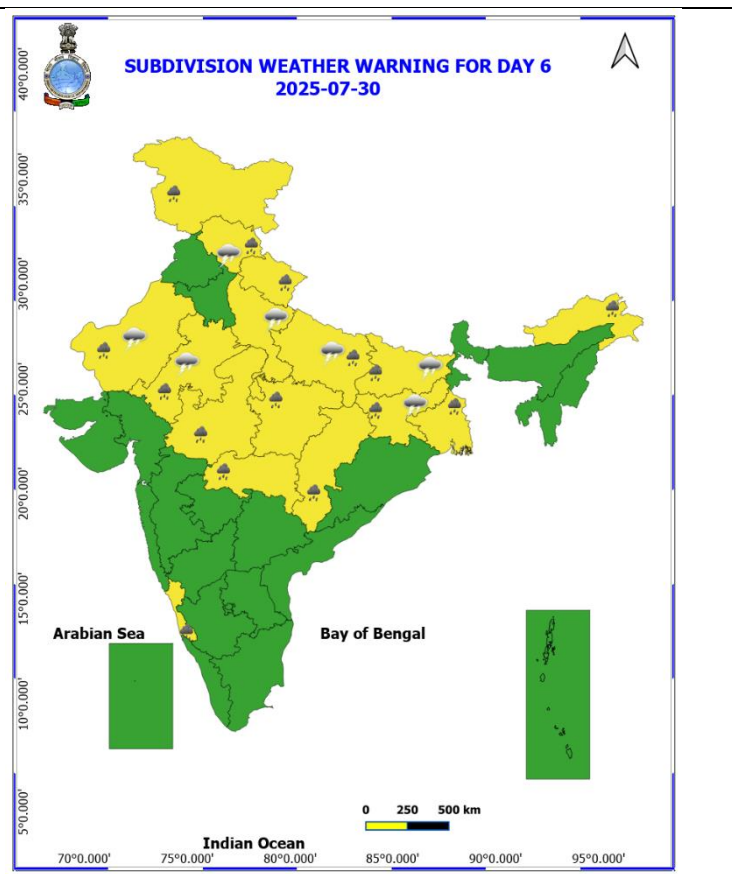
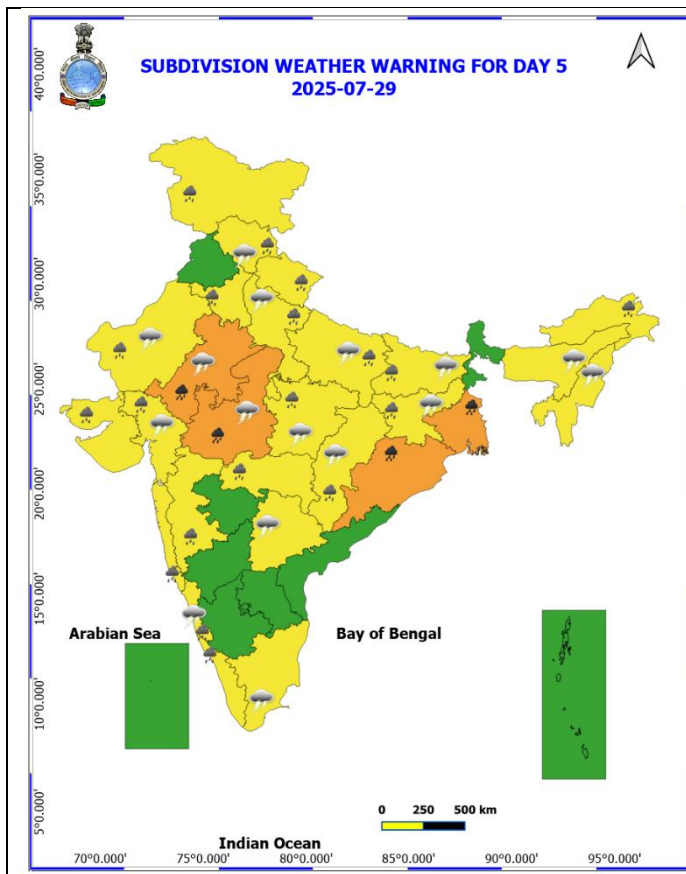
East Rajasthan: Light to moderate rainfall at most places with **heavy to very heavy rainfall** at a few places and **extremely heavy rainfall (≥ 21 cm)** is very likely at isolated places on 26th and 27th July and **heavy rainfall** at isolated places on 25th and 27th July

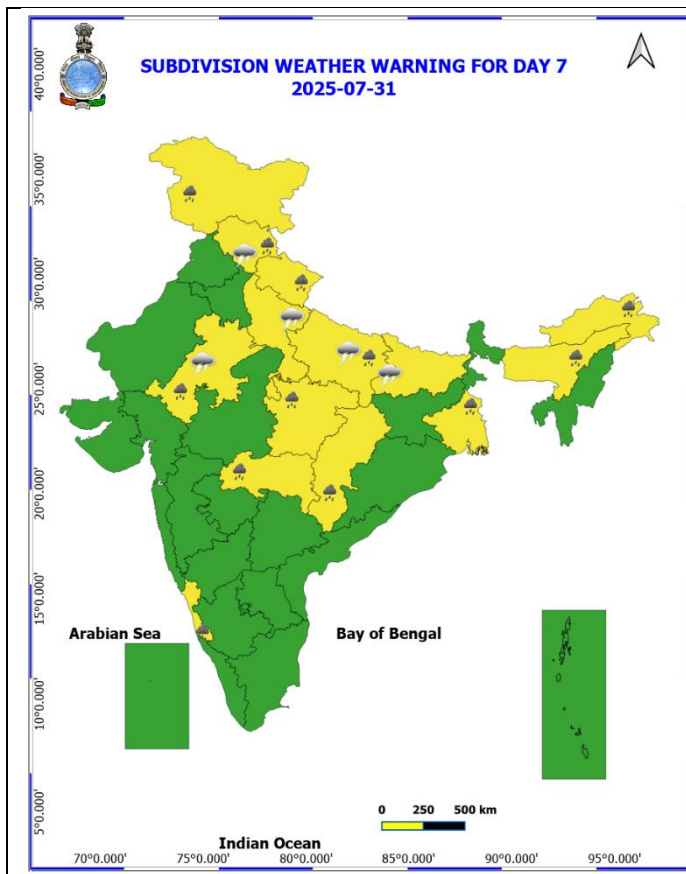
East Uttar Pradesh: Light to moderate rainfall at many places with **heavy rainfall** at isolated places is very likely on 25th & 26th July.


















Weather Warnings Graphics









- | | | |
|--|--|--|
|  Fog |  Heavy Snow |  Cold Wave |
|  Heavy Rain |  Dust Storm |  Cold Day |
|  Very Heavy Rain |  Heat Wave |  Ground Frost |
|  Extremely Heavy Rain |  Warm Night | |
|  Thunder & Lightning |  Hot Day | |
|  Hailstorm |  Hot & Humid | |
|  Dust Raising Winds |  Strong Surface Winds | |

COLOUR CODED WARNING

No Warning (No Action)
Watch (Be Aware)
Alert (Be Prepared To Take Action)
Warning (Take Action)

Probabilistic Forecast

Terms	Probability of Occurrence (%)
Unlikely	< 25
Likely	25 - 50
Very Likely	50 - 75
Most Likely	> 75

* Red colour warning does not mean "Red Alert", Red colour warning means "Take Action".
Forecast and Warning for any day is valid from 0830 hours IST of day till 0830 hours IST of next day.
For more details, kindly visit <https://mausam.ind.gov.in> or contact: 011-2434-4599
(Service to the Nation since 1875)

Flash Flood Guidance

24 hours Outlook for the Flash Flood Risk (FFR) till 0530 IST of 26-07-2025 :

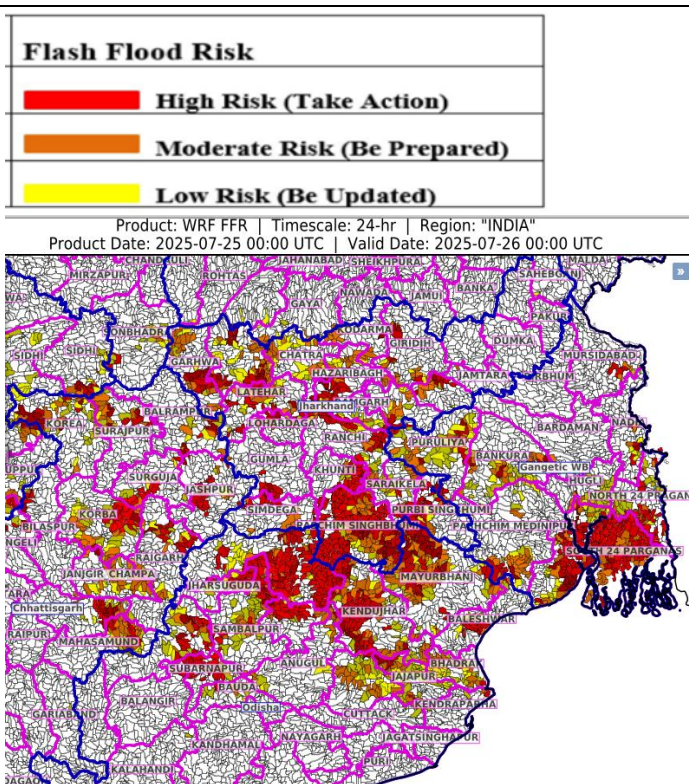
Low to Moderate flash flood risk likely over few watersheds & neighbourhoods of following Met Sub-divisions during next 24 hours.

Chhattisgarh – Balarampur, Baloda Bazar, Bilaspur, Janjgir Champa, Jashpur, Korba, Korea, Mahasamund, Mungeli, Raigarh, Surajpur and Surguja districts.

Jharkhand – Garhwa, Palamu, Latehar, Lohardaga, Gumla, Simdega, Khunti, Ranchi, Ramgarh, Bokaro, Pashchim Singhbhum, Purbi Singhbhum, Saraikela, Chatra, Giridih, Dhanbad and Hazaribagh districts.

Odisha – Anugul, Baleshwar, Baragarh, Bauda, Bhadrak, Cuttack, Kendraparha, Deogarh, Dhenkenal, Jajapur, Jharsuguda, Kendujhar, Mayurbhanj, Sambalpur and Subarnapur districts.

Gangetic West Bengal - Eastmednipur, Haora, North 24 Pragana, Pashchim Medinipur, Puruliya, Bankura, Mursidabad, Nadia and South 24 Parganas districts.



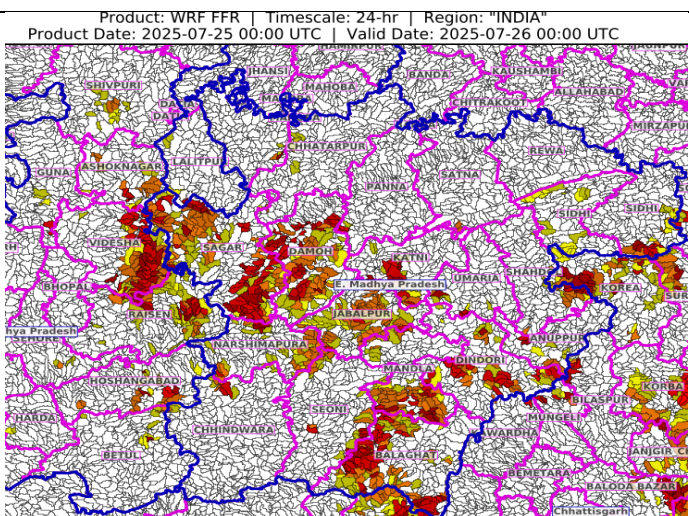
24 hours Outlook for the Flash Flood Risk (FFR) till 0530 IST of 26-07-2025:

Low to Moderate flash flood risk likely over few watersheds & neighbourhoods of following Met Sub-divisions during next 24 hours.

East Madhya Pradesh – Anuppur, Balaghat, Chhatrapur, Chhindwara, Damoh, Dindori, Jabalpur, Katni, Mandla, Narshimapura, Panna, Rewa, Sagar, Tikamgarh, Satna, Seoni, Shahdol, Sidhi and Umaria districts.

Adjoining West Madhya Pradesh - Ashoknagar, Guna, Raisen, Shivpuri, Narmadapuram, Betul and Videsha districts

Surface runoff/ Inundation may occur at some fully saturated soils & low-lying areas over Area of Concern (AoC) as shown in map due to expected rainfall occurrence in next 24 hours.



Annexure -I

Significant rainfall recorded (in cm) from 0830 hours IST of yesterday to 0830 hours IST of today, the 25th July, 2025:

Odisha: Kotpad (Koraput) 13, Chitrakunda K Guma (Malkangiri) 12, Kuchinda (Sambalpur) 11, Hatadihi (Keonjhar) 11, Lephripara (Sundargarh) 11, Banaigarh (Sundargarh) 10, Bonth (Bhadrak) 10, Agalpur (Bolangir) 10, Pallahara (Angul) 10, Malkangiri (Malkangiri) 9, Tensa (Sundargarh) 9, Telkoi (dist Keonjhar) 9, Sundargarh (Sundargarh) 9, Kirmira (Jharsuguda) 9, Khairamal (dist Boudhgarh) 9, Tiring (Mayurbhanj) 9, Lathikata (Sundargarh) 9, Salebhatta (dist Bolangir) 8, Soro (Balasore) 8, Ullunda (Sonepur) 8, Gurundia (Sundargarh) 8, Korukunda (Malkangiri) 7, Tangarpali (Sundargarh) 7, Jhumpura (Keonjhar) 7, Mathili (Malkangiri) 7,

East Madhya Pradesh: Mada (Singrauli) 18; Patharia (Damoh) 9; Orchha (Niwari), Kesli (Sagar), Bina (Sagar) 8 Each; Patan (Jabalpur), Rahatgarh (Sagar) 7 Each;

Chhattisgarh: Raghunath Nagar (Balrampur), Mukdega (Raigarh) 15 Each; Sukma (Sukma), Barpali (Korba) 14 Each; Poudi Uparora (Korba), Bade Bacheli (Dantewada) 13 Each; **Bihar**pur (Surajpur), Kutaru (Bijapur) 12 Each; Dantewara (Dantewada), Janjgir (Janjgir), Wandrafanagar (Balrampur), Seovrinarayan (Janjgir), Baloda (Janjgir), Dharamjaigarh (Raigarh), Doura Kochali (Balrampur), Pasaan (Korba), Bhothiya (Sakti) 10 Each; Champa (Janjgir), Bijapur (Bijapur), Bilaigarh (Sarangarh Bilaigarh), Darbha (Bastar), Bhairamgarh (Bijapur), Orcha (Narayanpur), Navagarh (Janjgir), Bamhndih (Janjgir) 9 Each; Balrampur (Balrampur), Kuakonda (Dantewada), Pamgarh (Janjgir), Jaijaipur (Sakti), Baramkela (Sarangarh Bilaigarh), Chhindgarh (Sukma), Bhaisma (Korba), Saragaon (Janjgir), Pondi Bachra (Koriya), Bhatgaon (Sarangarh Bilaigarh), Adbhar (Sakti), Chhotedongar (Narayanpur), Gangalur (Bijapur) 8 Each; Sakti (Sakti), Katghora (Korba), Manendragarh (Manendragarh Bharatpur), Gharghoda (Raigarh), Sarangarh (Sarangarh Bilaigarh), Lohandiguda (Bastar), Bastanar (Bastar), Marwahi (Gaurela Pendra Marwahi), Akaltara (Janjgir), Gidhori Tundra (Baloda Bazar), Kukdur (Kabirdham) 7 Each;

Gangetic West Bengal: Mo Saltlake (North 24 Parganas) 13; Alipore (Kolkata) 8; Dum Dum (North 24 Parganas) 7;

Vidarbha: Bhamragad (Gadchiroli) 11; Ballarpur (Chandrapur), Ahiri (Gadchiroli) 8 Each; Armori (Gadchiroli), Etapalli (Gadchiroli) 7 Each;